

Age /Sex: 18yrs/female

Complaints of progressive deformity in the back since 8 years

Pain in the left side of the trunk since 8 years

***On examination***

Right sided thoracic scoliosis

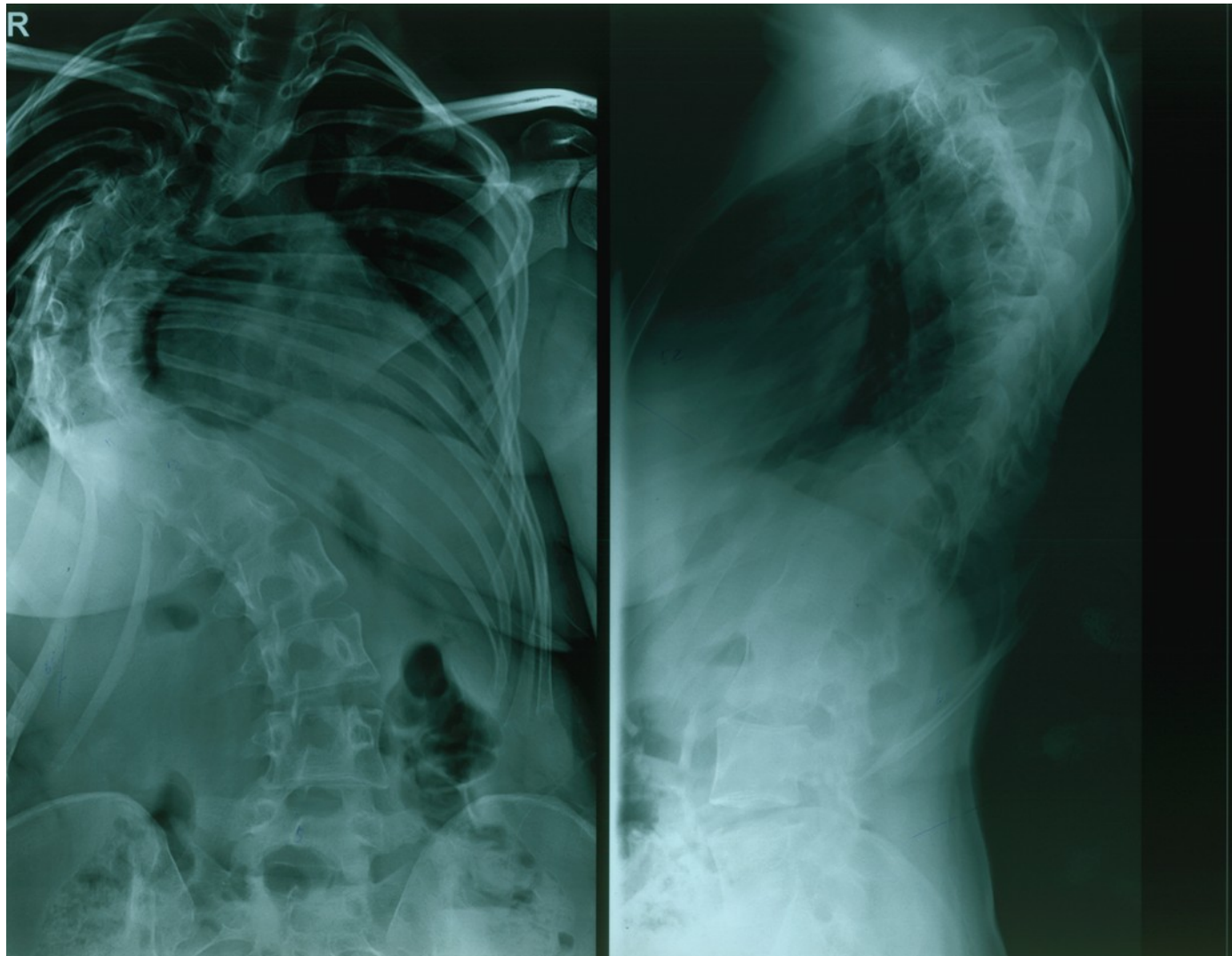
Rib hump on right side

Bilateral ASIS at same level

R shoulder at higher level by 3 cms

Neurologically intact

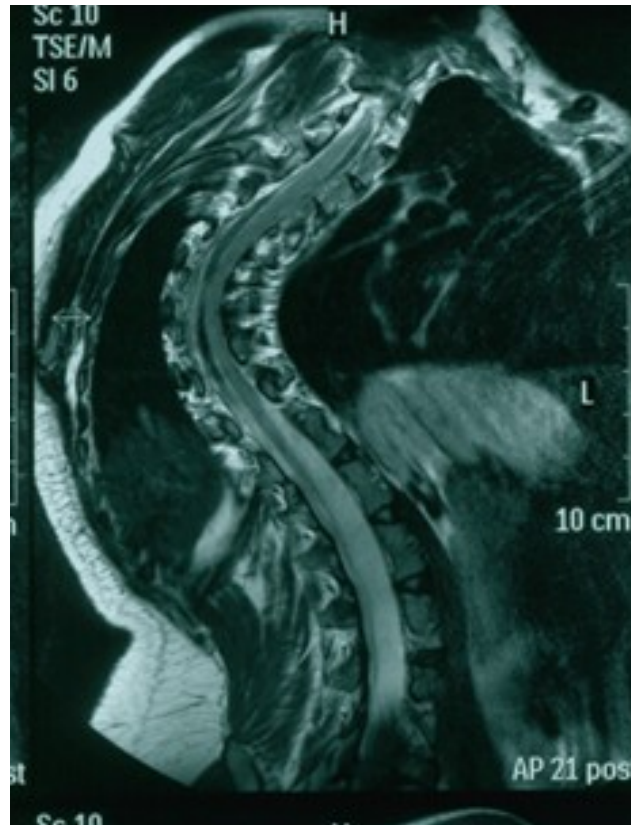
Lenke type 2 curve . Main thoracic cobb angle 100 . End vertebra –D5 and D11 . Apex at D7-8. Stable vertebra L3. Proximal thoracic curve 40 degrees







# MRI - no cord anomaly



**What will you do ?**

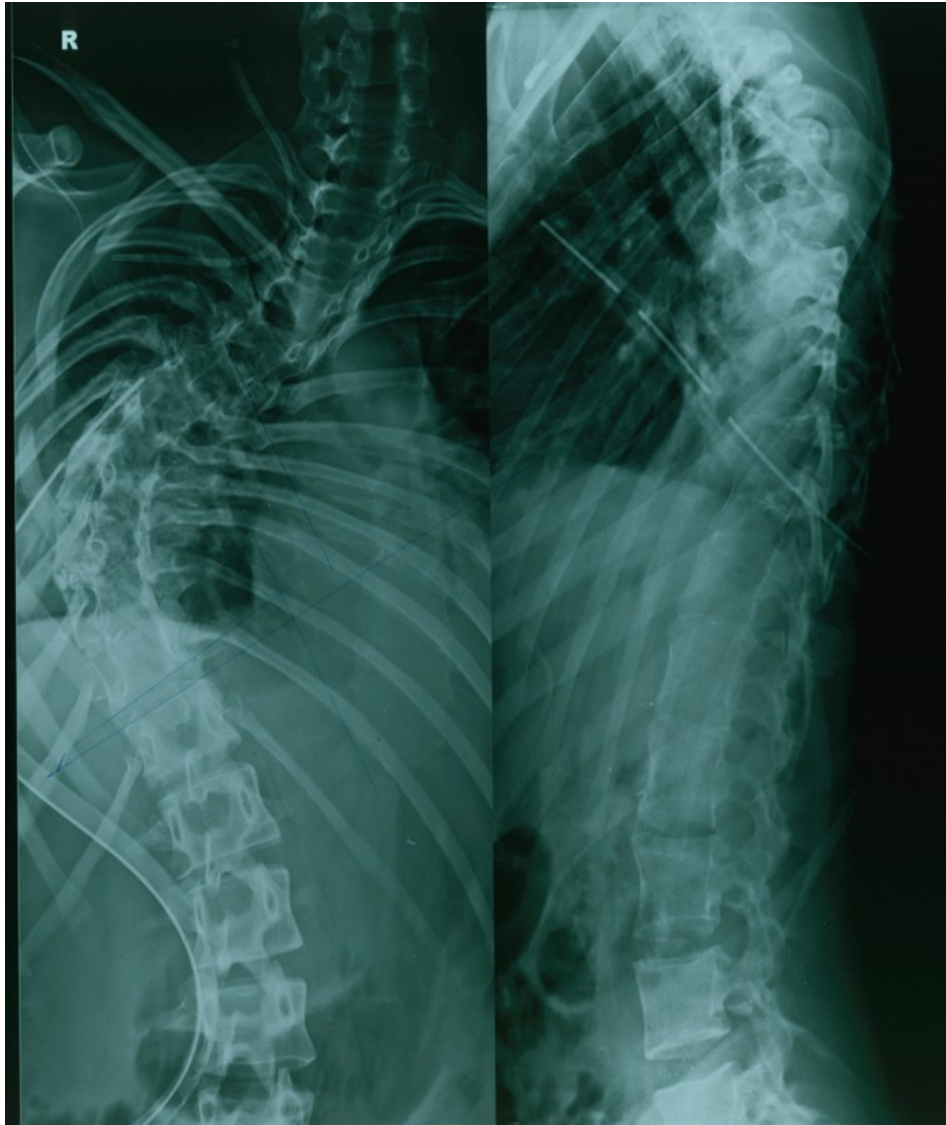
**Posterior only correction**

**Anterior plus posterior- one or  
two staged**

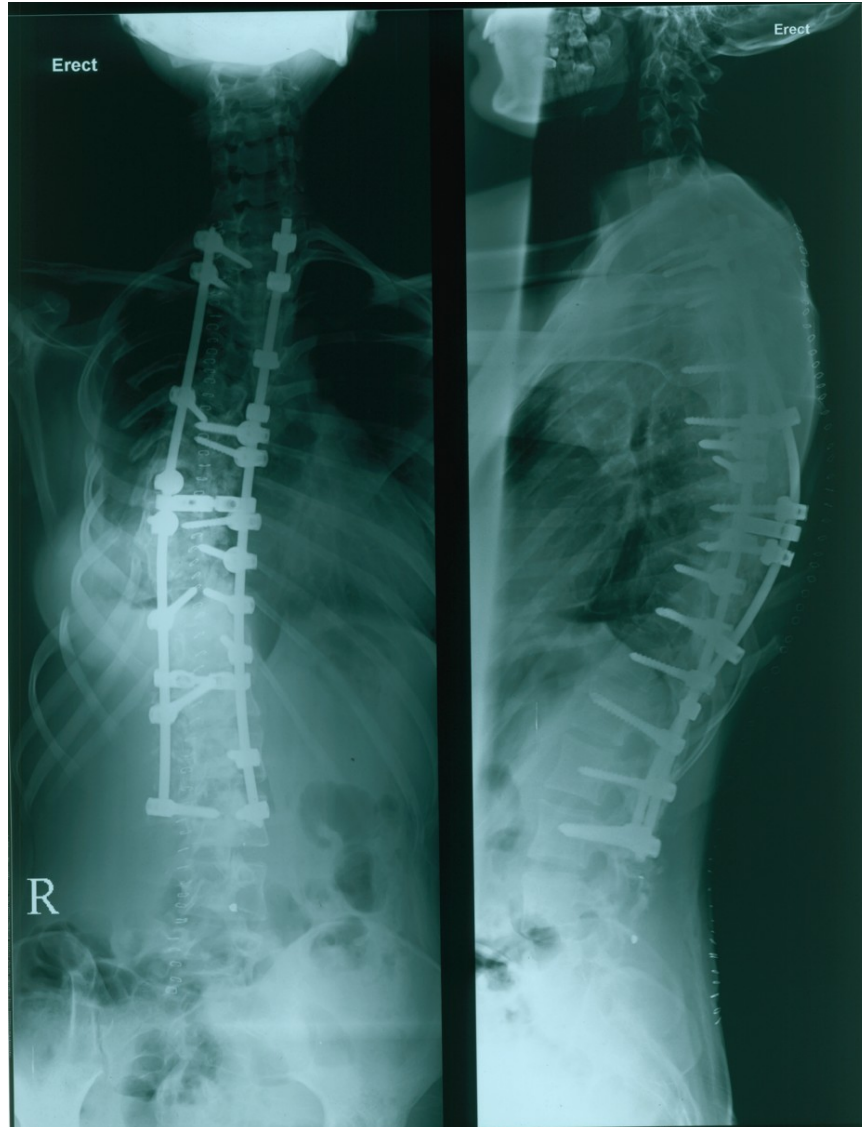
**How many levels**



In the first stage , right sided thoracotomy and anterior release was done at D6-7, D7-8, D8-9, D9-10, D10-11 levels along with bone grafting



In second stage, facetectomy (T1 - L3) with concave rib osteotomy with thoracoplasty for the rib hump done with posterior correction and pedicle screw fixation from T1 to L3 was done with bone grafting.



Post op cobb angle -39